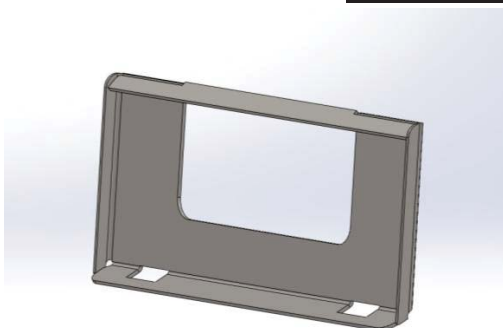


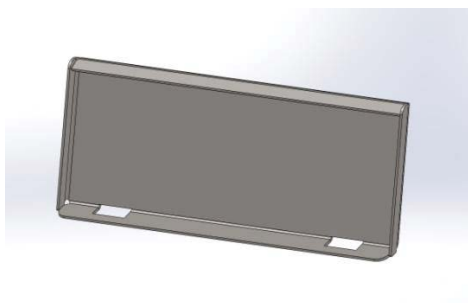
Mounting Plates



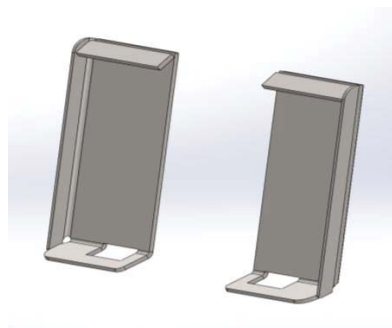
U-Style Model # 33000



V-Style Model # 33005







Solid Style Model # 33031



2 Piece Model # 33043

| Specifications | |
|-------------------------|--------|
| 33000 U Style | 58 lbs |
| 33005 V Style | 74 lbs |
| 33031 Solid | 85 lbs |
| 33043 - 2 Piece (L & R) | 41 lbs |

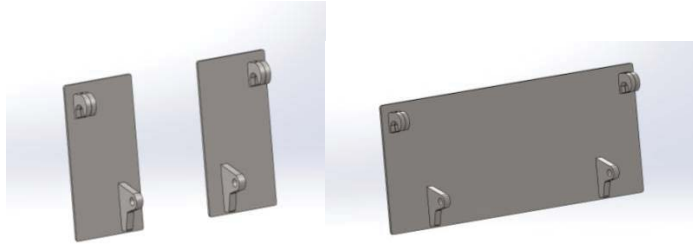
-  Durable construction for years of use
-  Update old attachments or build your own
-  Fits all loaders and skid steers with universal quick-attach hitches
-  Unpainted for easy welding

MOUNTING PLATES



Misc. Mounting Plates

**Euro Style Plates
2 piece
Model # 33229**



**Euro Style Plate
Model # 33219**







**JD 400/500
Series Kits
(Offset Style)
Model # 33228**

**JD 400/500
Series Kits
(Flat Style)
Model # 33199**

**RC-30 / PT-30
Model # 33130**

Specifications

| | |
|-----------------------|--------|
| 33229 Euro Style 2 PC | 46 lbs |
| 33219 Euro Style | 86 lbs |
| 33228 JD Offset Style | 40 lbs |
| 33199 JD Flat Style | 26 lbs |
| 33130 RC-30/PT0 | 53 lbs |

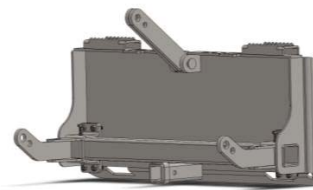
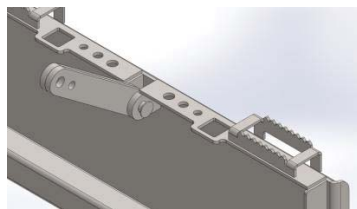
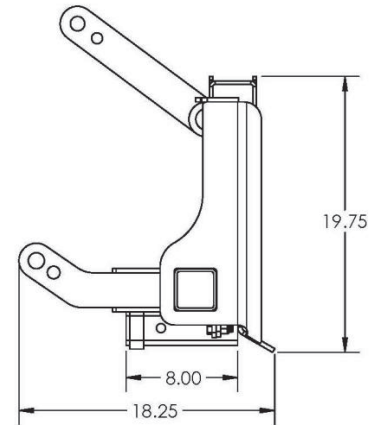
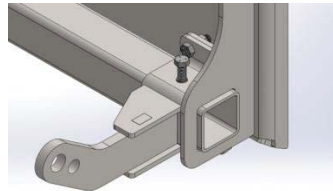
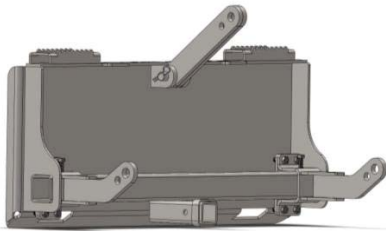
-  Durable construction for years of use
-  Update old attachments or build your own
-  Fits all loaders and skid steers with universal quick-attach hitches
-  Unpainted for easy welding



3 POINT ADAPTER

3 Point Adapter





Model # 33280



Specifications

| | |
|----------------|-----------------|
| Overall Width | 18.25" |
| Overall Height | 19.75" |
| Depth | 8" |
| Mounting Plate | 5/16" Grade 50 |
| Tube | 3" x 3" x 3/16" |
| Link Plates | 5/8" Grade 50 |
| Weight | 175 lbs |

FEATURES:

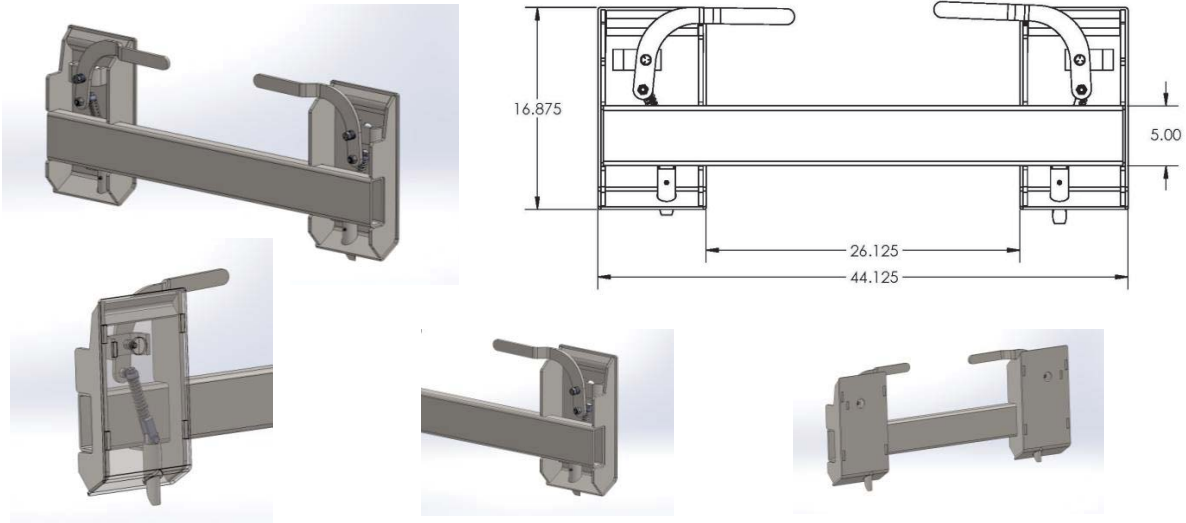
-  Universal Skid Steer Mount with Cat. I and II Adapters plus additional Receiver Hitch
-  Easily adapt 3 Point Tractor Attachments to Skid Steer
-  Durable, dependable and built to last
-  Painted using a 2 part Urethane Process for an exceptional finish

UNIVERSAL ADAPTER



Universal Quick Attach Adapter





Model # 33054



Specifications

| | |
|----------------|-------------------------------|
| Overall Width | 44.125" |
| Overall Height | 16.875" |
| Depth | 4" |
| Bracket Height | 16.875" |
| Bracket Width | 9" |
| Tube | 2" x 5" x .250" |
| Handle | Laser Cut 3/8" Grade 50 Steel |
| Weight | 104 lbs |

FEATURES:

-  Easily convert Pin On Style Loaders to Universal Skid Steer Style
-  Greaseable Pin and Bushing
-  Durable, dependable and built to last
-  Slim design keeps attachment close to machine

Note: This item is not painted

LEGEND ATTACHMENTS

Our Quality Is “LEGEND”ARY

QUICK ATTACH MOUNTING WELD-ON K

Skid Steer/Global/JD 400/500 Weld On Kits

| Model # | Description | WT. | List |
|---------------|------------------------------------------------|-----|--------|
| LA 33005 | V Style Universal Weld On Skid Steer Plate | 74 | 221.00 |
| LA 33000 | U Style Universal Weld On Skid Steer plate | 58 | 201.00 |
| LA 33031 | Solid Universal Weld On Skid Steer Plate | 85 | 236.00 |
| LA 33043 L-R | 2 Piece Universal Weld On Skid Steer Plate | 41 | 128.00 |
| LA 33219 | Global/Euro Weld On Plate (1-Pc.) | 88 | 322.00 |
| LA 33228 | J.D. 400/500 Series Weld On Kit (2-Pc.) | 40 | 224.00 |
| LA 33229 | Global/Euro Weld On Kit (2-Pc.) | 46 | 188.00 |
| LA 33054 | Universal Quick Attach Plate | 104 | 614.00 |
| LA 33280 | 3 Point Adapter | 175 | 809.00 |
| LA 33199 | JDeere 400/500 Series Weld-On kit – Flat Style | 26 | 196.00 |
| LA 33312 | JDeere 400/500 Series U-STYLE mount plate | 65 | 275.00 |
| LA 33130 | PT-30 / RC-30 Mounting Plate | 53 | 174.00 |
| LA 33182 | Toro Dingo Mounting Plate | 30 | 132.00 |
| LA 33304 | Bobcat 440, 440B 443 444 Mounting Plate | 31 | 141.00 |
| LA 33334 | Euro / Global Quick Attach Adapter | 165 | 890.00 |
| LA 33201B | U-Style Bale Accumulator Mount Assy | 89 | 364.00 |
| LA 33201-Euro | Euro Style Bale Accumulator Mount Assy | 114 | 401.00 |
| LA 33201-JD | JD 400/500 Bale Accumulator Mount Assy | 114 | 401.00 |
| LA 33031-HD | Solid Mount Plate 3/8 | 102 | 299.00 |
| LA 33382 | J/D 400/500 Quick Attach Adapter | 165 | 890.00 |



U Style Quick Attach Mounting Weld on Kit



Solid Universal Weld on Quick Attach



V Style Quick Attach Mounting Weld on Kit



Global / Euro Style Weld on Kit